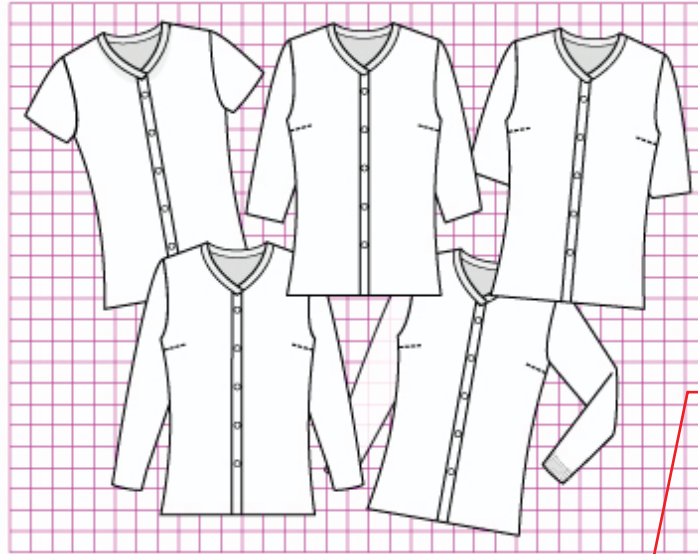


# Daisy Cardigan



Re-size your pattern as many times as you like. Growing kids? No problem!

## Daisy Cardigan

Misses fitted cardigan with set-in sleeves, V neckline and shaped shoulders. 5 sleeve lengths are included.

### Sue Jalowiec

Creation date: Friday, 5/17/2013

### Personal Pattern Notes:

Made for Aubrie, Yeoman Cannele, tension 7, Brother 970 - stockinette with crochet edges

Knit it Now's patterns are copyrighted material and the entire contents of this service are copyrighted as a collective work under the copyright laws of the United States.

You may print this pattern from your own personal use or enjoyment, but may not edit, publish, transmit, e-mail, post to a list service or database. or otherwise

**Ease:** Loose

**Size:** Misses Sizes 31.5

**Finished Chest:** 36.00

**Finished Length:** 23.50

### Included Sleeve Lengths

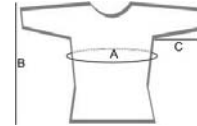
Long : 16.00

Short : 3.00

Elbow Length : 8.00

3/4 Length : 11.00

Ribbed Cuff : 16.00



**Skill Level:**      
Advanced Beginner

You can knit each piece in a different gauge. Example: Lace sleeves and stockinette body

**Back** 1" gauge 7 stitches / 11 rows

**Front** 1" gauge 7 stitches / 11 rows

### Included Sleeve Lengths

**Long** 1" gauge 7 stitches / 11 rows

**Short** 1" gauge 7 stitches / 11 rows

**Elbow Length** 1" gauge 7 stitches / 11 rows

**3/4 Length** 1" gauge 7 stitches / 11 rows

**Ribbed Cuff** 1" gauge 7 stitches / 11 rows

**Button Band** 1" gauge 7 stitches / 11 rows

**Neck Band** 1" gauge 7 stitches / 11 rows

### Metric dimensions, too!

**Finished Chest:** 92.00

**Finished Length:** 61.00

### Included Sleeve Lengths

Long : 41.00

Short : 8.00

Elbow Length : 21.00

3/4 Length : 28.00

Ribbed Cuff : 41.00

**Skill Level:**      
Advanced Beginner

## Front (knit 2)

### Cast On

RC: 0 Cast on 60 stitches.  
Lengthen or shorten here

### Taper

RC: 0 Decrease 1 stitch Left side every 8 row, 10 times  
( 8 - 16 - 24 - 32 - 40 - 48 - 56 - 64 - 72 - 80 )

RC: 80 End of Taper

[Click here for optional shorten or lengthen instructions](#)

\* If you modify your height, make sure your change all of of your garment pieces

### Knit In Pattern

RC: 80 Knit even over 50 stitches to row 89

### Taper

RC: 89 Increase 1 stitch Left side every 6 row, 7 times  
( 95 - 101 - 107 - 113 - 119 - 125 - 131 )  
Increase 1 stitch Left side at every 7 rows, 3 times  
( 138 - 145 - 152 )

RC: 152 End of Taper

[Click here for optional short](#)  
\* If you modify your height, make sure your change all of of your garment pieces

[Click here for optional dart instructions](#)

### Knit In Pattern

RC: 152 Knit even over 60 stitches to row 163

*For easier seaming, place a yarn marker at regular intervals on both back and front side seams.*

### Armhole

RC: 163 Bind off 5 stitches at armhole edge  
RC: 165 Bind off 4 stitches at armhole edge  
RC: 167 Bind off 1 stitches at armhole edge  
RC: 169 Decrease one stitch every other row 5 times  
( 169 - 171 - 173 - 175 - 177 )  
RC: 178 Knit 70 rows in pattern over 45 stitches

### V Neck Shaping

Work shoulder shaping at the same time.

RC: 194 Set machine to hold.  
Place all needles left of 0 to holding position. Work decreases on right side of neck opening.  
Decrease 1 stitch at neck edge every 2 rows, 6 times  
( 194 - 196 - 198 - 200 - 202 - 204 )  
Decrease 1 stitch at neck edge every 3 rows, 18 times  
( 207 - 210 - 213 - 216 - 219 - 222 - 225 - 228 - 231 - 234 - 237 - 240 - 243 - 246 - 249 - 252 - 255 - 258 )

### Shoulder Shaping

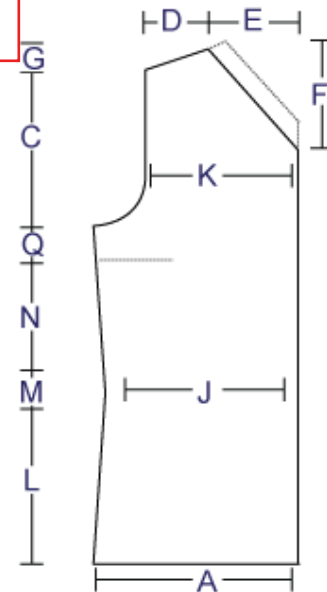
RC: 248 Bind off or shortrow (hold) 4 stitches every other row, 3 times at armhole edge  
( 248 - 250 - 252 )  
Bind off or shortrow (hold) 3 stitches every other row, 3 times at armhole edge  
( 254 - 256 - 258 )

Re-hang left stitches on the machine. Repeat decrease shaping as for the right side.

Decrease rows

Stitch Counts

60  
60  
50  
50  
50  
60



## Front

Stitch gauge: 7

Row gauge: 11

Label	Inches	Rows	Stitch Count
<b>A</b> Cast On	↔ 8.5		60
<b>L</b> Taper	↑ 7.25	80	
<b>J</b> Taper End	↔ 7		50
<b>M</b> Knit Straight	↑ 1	9	50
<b>N</b> Taper	↑ 5.75	63	
<b>Q</b> Knit Straight	↑ 1	11	60
<b>K</b> Shoulder Width	↔ 6.25		45
<b>C</b> Armhole Depth	↑ 7.75	86	
<b>F</b> Neck Depth	↑ 6	66	
<b>E</b> Neck Opening	↔ 3.25		24
<b>D</b> Shoulder	↔ 3		21
<b>G</b> Shoulder Slope	↑ 1	12	

Measurements have been rounded to the nearest .25 inch

Sue Jalowiec  
For Personal Use only  
Knit@Now Inc - All Rights Reserved - © 2013

## Long Sleeves (knit 2)

### Cast On

RC: 0 Cast on 62 stitches.

### Taper

RC: 0 Increase 1 stitch both sides every 10 rows, 11 times  
( 10 - 20 - 30 - 40 - 50 )  
Increase 1 stitch both sides every 11 rows, 11 times  
( 61 - 72 - 83 - 94 - 105 - 116 - 127 - 138 - 149 - 160 - 171 )

RC: 171 End of Taper

[Click here for optional shorten or lengthen instructions](#)

*\* If you modify your height, make sure your change all of your garment pieces*

Perfect sleeve lengths every time!  
No Math!

### Knit In Pattern

RC: 171 Knit even over 94 stitches to row 176

### Sleeve Cap

RC: 176 Bind off 5 Stitches at beginning of row.

RC: 177 Bind off 5 Stitches at beginning of row.

RC: 178 Decrease 1 stitch both sides every 1 rows, 4 times  
( 179 - 180 - 181 - 182 )

Decrease 1 stitch both sides every 2 rows, 4 times  
( 184 - 186 - 188 - 190 )

RC: 191 Decrease 1 stitch both sides every 3 rows, 6 times  
( 194 - 197 - 200 - 203 - 206 - 209 )

Decrease 1 stitch both sides every 4 rows, 2 times  
( 213 - 217 )

RC: 218 Decrease 1 stitch both sides every 1 rows, 4 times  
( 219 - 220 - 221 - 222 )

Decrease 1 stitch both sides every 2 rows, 4 times  
( 224 - 226 - 228 - 230 )

RC: 232 Decrease 2 Stitches on each side.

RC: 233 Knit 1 Row.

RC: 234 Decrease 2 Stitches on each side.

RC: 235 Knit 1 Row.

RC: 236 Decrease 3 Stitches on each side.

RC: 237 Knit 1 Row.

RC: 238 Bind off remaining stitches.

62

62

94

94

89

84

68

52

36

32

32

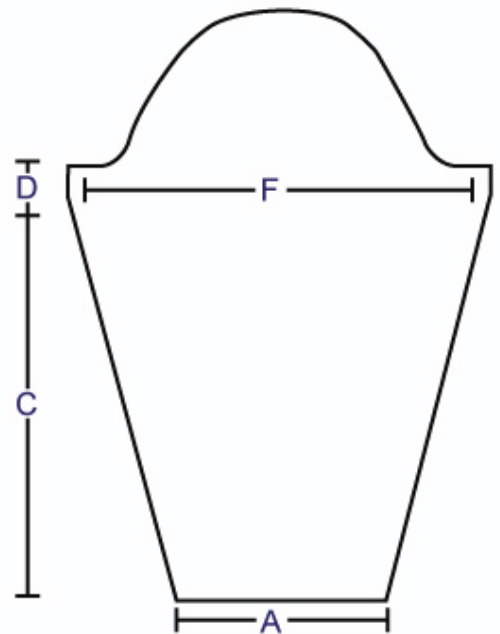
28

28

22

22

22



### Long Sleeves

Stitch gauge: 7

Row gauge: 11

Label	Inches	Rows	Stitch Count
<b>A</b> Cast On	↔ 9		62
<b>C</b> Taper	↑ 15.5	171	
<b>F</b> Taper End	↔ 13.5		94
<b>D</b> Knit Straight	↑ 0.5	5	94

Measurements have been rounded to the nearest .25 inch

Sue Jalowiec  
For Personal Use only

Knit It Now Ilc - All Rights Reserved - © 2013

Multiple sleeve lengths included in all patterns.

## Short Sleeves (knit 2)

### Cast On

RC: 0 Cast on 90 stitches.

### Taper

RC: 0 Increase 1 stitch both sides every 14 rows, 1 times 90

( 14 )

Increase 1 stitch both sides every 15 rows, 1 times

( 29 )

RC: 29 End of Taper 94

[Click here for optional shorten or lengthen instructions](#)

*\* If you modify your height, make sure your change all of of your garment pieces*

### Knit In Pattern

RC: 29 Knit even over 94 stitches to row 34 94

### Sleeve Cap

RC: 34 Bind off 5 Stitches at beginning of row. 89

RC: 35 Bind off 5 Stitches at beginning of row. 84

RC: 36 Decrease 1 stitch both sides every 1 rows, 4 times ( 37 - 38 - 39 - 40 )  
Decrease 1 stitch both sides every 2 rows, 4 times ( 42 - 44 - 46 - 48 ) 68

RC: 49 Decrease 1 stitch both sides every 3 rows, 6 times ( 52 - 55 - 58 - 61 - 64 - 67 )  
Decrease 1 stitch both sides every 4 rows, 2 times ( 71 - 75 ) 52

RC: 76 Decrease 1 stitch both sides every 1 rows, 4 times ( 77 - 78 - 79 - 80 )  
Decrease 1 stitch both sides every 2 rows, 4 times ( 82 - 84 - 86 - 88 ) 36

RC: 90 Decrease 2 Stitches on each side. 32

RC: 91 Knit 1 Row. 32

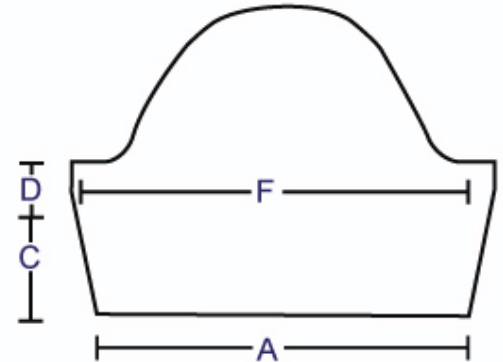
RC: 92 Decrease 2 Stitches on each side. 28

RC: 93 Knit 1 Row. 28

RC: 94 Decrease 3 Stitches on each side. 22

RC: 95 Knit 1 Row. 22

RC: 96 Bind off remaining stitches. 22



### Short Sleeves

Stitch gauge: 7

Row gauge: 11

Label	Inches	Rows	Stitch Count
<b>A</b> Cast On	↔ 13		90
<b>C</b> Taper	↑ 2.75	29	
<b>F</b> Taper End	↔ 13.5		94
<b>D</b> Knit Straight	↑ 0.5	5	94

Measurements have been rounded to the nearest .25 inch

Sue Jalowiec

For Personal Use only

Knit it Now! - All Rights Reserved - © 2013

Dynamic patterns are easy to find in your personal library on the Knit it Now website

## Button Band (knit 2)

There are many techniques for adding buttonholes to a button band.

The following instructions give the math for positioning a six buttons on a 1" band (finished width). The buttons are positioned 1" from the hem and 1" from the neckline. The buttonholes are 1/2" wide.

Adjust your buttonhole placement according to the size and number of buttons you choose.

Use the Knit it Now Buttonhole placement tool for:

- a different number of buttons
- choose where to position the buttons at hem and neck
- a different size button
- a different size band
- if you have lengthened or shortened your sweater

### Button Band

RC: 0 With right side facing, hang your front edge over 123 needles on the needle bed. 123  
Knit in pattern for 5 rows at garment tension.

RC: 5 Knit 7 stitches  
Work buttonhole over the next 2 stitches  
Knit 19 stitches  
Work buttonhole over the next 2 stitches  
Knit 19 stitches  
Work buttonhole over the next 2 stitches  
Knit 19 stitches  
Work buttonhole over the next 2 stitches  
Knit 19 stitches  
Work buttonhole over the next 2 stitches  
Knit 19 stitches  
Work buttonhole over the next 2 stitches  
Knit 19 stitches  
Work buttonhole over the next 2 stitches  
Knit 7 stitches 123

NOTE: If you have lengthened or shortened this pattern you will need to respace your button holes. Please use [button hole placement tool](#) to help you calculate.

RC: 6 Knit in pattern for 5 rows 123

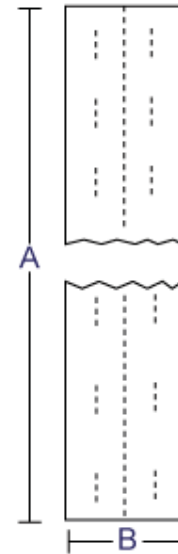
RC: 11 Knit a turning row (garter row, larger tension, chain cast on, eyelet row for picot) 123

RC: 12 At garment tension MINUS 1 Knit in pattern for 5 rows 123

RC: 17 Repeat buttonhole instructions from row 5 123

RC: 18 Knit in pattern for 5 rows 123

RC: 23 Bind off 123 Stitches



### Button Band

Stitch gauge: 7

Row gauge: 11

Label	Inches	Rows	Stitch Count
<b>A</b> Band Cast On	↔ 17.5		123
<b>B</b> Band Depth	↑ 2	23	

Measurements have been rounded to the nearest .25 inch

Customize your button band for your button size and your custom sweater length

To finish, fold band in half and neatly stitch bind off edge to pick up seam. Repeat for buttonband, eliminating the buttonholes.

Repeat for buttonband, eliminating the buttonholes.

This sample pattern has been shortened. Everything you need to knit your garment is included in your pattern. Because the pattern doesn't have to fit in the pages of a book or magazine, we've eliminated abbreviations and added additional info to help you be successful. Remember, you can print only the pages you need!