

DesignaKnit8

**DesignaKnit Graphics
Studio**

Licence Agreement

You should read the following terms and conditions carefully before using DesignaKnit 8 ("the Software"). Unless you have a different licence agreement signed by Soft Byte Ltd, your use of this software indicates your acceptance of this licence agreement and warranty. If you do not accept these terms you must cease using this software immediately.

Copyright

DesignaKnit 8 © 2010-2011 by Soft Byte Ltd., all rights reserved.

Use of the Software

You shall not modify, decompile, disassemble, or otherwise reverse engineer the Software or the optical disk on which it may be supplied. Any such unauthorized use shall result in immediate and automatic termination of this Agreement.

One registered copy of the Software may be used by a single person. The Software may be installed on a second or portable computer, but may be run only on one computer at a time.

Warranty - Software

With respect to the disks and manual enclosed herein, Soft Byte Ltd warrants the same to be free from defects in materials and workmanship for a period of 60 days from the date of purchase. In the event of notification within the warranty period, Soft Byte or its agents will replace or amend the defective disk or manual. The remedy for breach of this warranty shall be limited to replacement or amendment and shall not encompass any other damages, including but not limited to loss of profit, and special, incidental, consequential, or other similar claims.

Warranty - Cable links

With respect to the DesignaKnit cable links, USB to serial converters, magnet arms, and Knitlink platforms, Soft Byte Ltd warrants the same to be free from defects in materials and workmanship for a period of 12 months from the date of purchase. In the event of notification within the warranty period, Soft Byte or its agents will replace or repair the defective item. The remedy for breach of this warranty shall be limited to replacement or repair and shall not encompass any other damages, including but not limited to loss of profit, and special, incidental, consequential, or other similar claims

Disclaimer

Soft Byte Ltd specifically disclaims all other warranties, expressed or implied, including but not limited to implied warranties of merchantability. In no event shall Soft Byte Ltd be liable for any loss of profit or any other commercial damage, including but not limited to special, incidental, consequential or other damage.

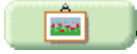
Your work

Any printouts that you have made with DesignaKnit are your property and you are free to publish them or sell them. The same applies to stitch patterns and shaping data files that you have made.

You may print out topics from DesignaKnit's Help for your own reference. You may not reproduce any part of Help by any means for commercial gain or for any other purpose without the express permission in writing of Soft Byte Ltd.

Overview

This section of the program is for converting graphics, photos or pictures as well as scanned charted designs into stitch patterns.



To open the section, click on the Graphics Studio button on the main opening screen or, from within the program, on the button on the left-hand tool bar.

What's New In DesignaKnit 8 Graphics Studio

DesignaKnit 8 has given you even more control over the conversion of pixels to yarns.

Improved Thumbnail Browser

Extra options in the updated Thumbnail Browser allow you to sort and search through your graphic and image files

New Palette Open and Save Options

You can now load a previously saved Palette (Woolbox) directly into the Yarn Colors palette, without having to load it first in Stitch Designer. You can either load a .plt file or use the yarn colors from an existing stitch pattern file.

You can also save your Graphics Studio Yarn Colors Palette to a .plt file, which you will be able to reload at any time either in the Graphics Studio or in Stitch Designer.

Detached Palettes

This option allows the Yarn Colors palette to be detached from the main window. This is particularly useful when dealing with a large graphic or zoomed area as the image is not obscured by the dialogues.

Wizard

Users now have a choice as to how they approach image conversion: instead of being guided automatically through the various stages as soon as an image file is loaded, you can use the Wizard whenever you choose. This allows you the freedom to view pictures and select desired areas for conversion before starting to process the image.

Image Formats and Size

DesignaKnit offers a wider choice of image formats for conversion. In addition to .bmp, .gif, .jpg, .pcx, .png, and .tif, you can now convert .ico, .tga, .wmf as well as .pbm, .pgm and .ppm graphics. DesignaKnit Graphics Studio can now handle high resolution images and larger file sizes.

Menus

The Menu bar gives you access to all the functions and options in the Graphics Studio. Some of these also have equivalent shortcut buttons on the Tool Bar on the left side of the window.

File

Thumbnails

Open a graphic file using the DesignaKnit Graphics Studio Thumbnails Browser. This is similar to the Stitch Designer Thumbnails browser, and offers you search and information options which are not readily available in the normal Windows dialogue.

DesignaKnit Graphics Studio can process graphics files in a number of different formats. To see a list of thumbnails of all supported graphics formats in a single directory, choose Graphics Files from the drop-down file type list. To filter out all but a particular format, select that type from the file type list



Alternatively, open the Thumbnails dialogue by clicking on the **File/Open** button on the Tool Bar.

Open graphic

Open a graphic file using the normal Windows file dialogue.

Save graphic as

Save your modified graphic as a new file. Give the file a new name to prevent overwriting the original graphic. Use the drop-down list to select the format in which the file should be saved.

DesignaKnit will save modifications made to the image itself using options from the Image Menu, not the stitch conversion settings or other conversion configurations.

Use this function as a quick way of converting one format to another. For instance, it is only possible to modify the colors in a True or High Color image, so it may be necessary to save an image in such a format in order to reopen it and then proceed with any modifications.



Alternatively, save the image by clicking on the **Save** button on the Tool Bar.

Close graphic

Close the current graphic without exiting the Graphics Studio.

Grid settings

Open the Grid Settings dialogue.



Alternatively, open this dialogue using the **Grid Settings** button on the Tool Bar.

Conversion settings

Open the Conversion Settings dialogue.



You can also open this dialogue using the **Conversion Settings** button on the Tool Bar.

Exit

If the image has not yet been converted to a stitch pattern, you will be asked if you wish to convert now.

Click **Yes** to convert at the current settings and continue processing the image in Stitch Designer.

Click **No** to abandon the conversion and return to Stitch Designer.

Click **Cancel** to return to the Graphics Studio

Edit

Copy at current zoom

Copies the image, or selected area of the image, to the Windows Clipboard at the current size.

Copy at original zoom

Copies the image, or selected area of the image, to the Windows Clipboard at the original size.

Paste

Paste an image from another application, or one copied from the DesignaKnit Graphics Studio, directly onto the workspace. Using the paste command replaces the image currently in the workspace, so work should be saved in order for it not to be lost. It is not possible to add to or insert a pasted image into the current one.

An image pasted into the program is treated as a new image, and is always pasted in at a zoom factor of 1. Thus, if the size of an image was changed before copying it to the clipboard, either by zooming in or by zooming out, when it is pasted back in, it will be in the new size which is now assumed to be zoom level 1.

If the Paste option is not available it is either because there is nothing on the clipboard or the current contents are not a compatible image.

Select All

Snaps the Selection Box back to its default position which includes the entire image. A quick way to do this is to click outside the selection box.

View

Grid

Toggles the grid display on and off.



Alternatively, use the **View Grid** button on the Tool Bar.

Yarns

Toggles the Yarn Colors Palette on and off.



Alternatively, use the **Yarn Colors Palette** button on the Tool Bar.

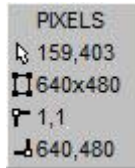
Stitches

Toggles the display between a preview of the converted stitch pattern and the unconverted image.



Alternatively, use the **Preview Conversion** button on the Tool Bar.

Pixel dimensions



Toggles the display on the tool bar showing the positions (co-ordinates) of the top left and bottom right corners of the Selection Box/Grid, its dimensions and the position of the Cursor when hovered over the image. If the grid corners have been set to move independently and the grid is not rectangular, the coordinates shown relate to the positions of the top left and bottom corners in line with the widest dimension.

Hints

If this option is checked, when the cursor is hovered over a button or item on the Tool Bar, a hint as to its function will be shown.

Image

Revert to original

Restores the original image file. Any changes you have made will be lost, so if you want to keep a copy, use File/Save graphic as before reverting.

Type

Opens the **Image Type** dialogue: choose between Picture (multi-colored images) and Diagram (monochrome images).

Crop

Crops the image to the currently selected area.

Flip Vertically

Flips the entire image from top to bottom.

Flip Horizontally

Flips the entire image from left to right

Rotate

Rotate the image to any angle. Choose between **Simple** and **High Quality** which uses anti-aliasing to smooth the edges. Whilst the latter option is generally more suited to photographic images, the edge-smoothing process could result in the introduction of additional colors.

Modify image colors

Use this option to apply currently selected colors in the Yarn Palette to the image. If color assignments have been allocated already using the Color Mapping and/or Yarn Definition tools, then DesignaKnit will use those settings in the conversion process. If some or all colors have not yet been specifically assigned, DesignaKnit will convert those to the nearest selected colors it finds in the Yarn Palette.

Restore image colors

Restores the image to its original colors.

Zoom

Zoom in or Zoom out

Alter the current Zoom level by a factor of ten per cent.



Alternatively, use the **Zoom** buttons on the tool bar.

Zoom x 1, 2, 3 or 4

Zoom to specific levels of 100% to 400%.

If the size of the image exceeds the workspace area, scroll bars will appear at the bottom and the right of the window.

Fit to width or Fit to height

These options will fit the image to the current workspace, according to the chosen dimension, keeping the aspect ratio correct, which may result in scroll bars appearing either at the bottom or the right of the window in order to accommodate the other dimension.

Options

Floating windows

When DesignaKnit Graphics Studio is not running full screen, if checked, this option allows the Yarn Colors Palette to be dragged out of the DesignaKnit window so that the image file is not obscured by the dialogues.

Help

Opens the Help for DesignaKnit 8 Graphics Studio.

Tool Bar Buttons

The Toolbar on the left of the Graphics Studio window contains shortcut buttons to the main tools for converting graphics to stitch patterns.

When you first enter the Studio the button, except for the Open Thumbnails, Close and Exit, and Help, are unavailable. This is because you must have a photo or graphic file open before the buttons are activated.



[Open Thumbnails](#)

Click here to open the Thumbnails dialogue. By default, the Thumbnails dialogue opens the Pictures folder (My Pictures in Windows XP).

If you prefer to use the Windows Explorer browser, then open the **File menu** and click on **Open Graphic**.



[Save Graphic As](#)

Click here to save your graphic as a new file - you can use this option to save it with a new file name or to convert it to a different format.



[Zoom In](#)

Zoom in to the graphic in increments of 10%. The current zoom level is displayed underneath the Zoom buttons.



[Zoom Out](#)

Zoom out of the graphic in increments of 10%. The current zoom level is displayed underneath the Zoom buttons.



[Select Area](#)

By default the selection box encloses the entire graphic. To select a smaller area, click this button and drag a box to enclose the area you want. To remove the box, click once outside and it will revert to selecting the whole graphic. To select a different area, click on the button again and drag to form a new selection box.



[Grid Settings](#)

Use the Grid Settings dialogue to set the scale and size of the area to be converted to stitches.



[Display Grid](#)

Click here to toggle the grid display on and off.



[Conversion Settings](#)

Use the Conversion Settings dialogue to set up the maximum colors per row, amount of bird's-eye and type of color boundary.



Preview

Click here to toggle Preview mode on and off. Preview is ON when the button is colored.



Yarn Colors Palette

Display the Yarn Colors Palette so that you can set up the colors the want and you can use the color mapping tools.



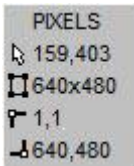
Color Mapping Tool

Use this dropper to map specific colors in your graphic to existing colors in the Yarn Colors Palette



Yarn Definition Tool

Use the this dropper to pick up an image color and drop it into the Yarn Colors Palette as a new color.



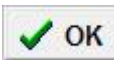
Information Panel

This panel shows information regarding size of the selected area and the exact position of the selection box corners as well as the current position of cursor. Toggle the display on and off via the View/Pixel dimensions menu option.



Graphics Studio Wizard

After you have opened a graphics file, you can use the wizard to guide you through the conversion process.



Finish conversion

Click here to finish converting the graphic and open the resulting pattern in Stitch Designer.



Cancel conversion

Click here to return to Stitch Designer without converting the graphic.



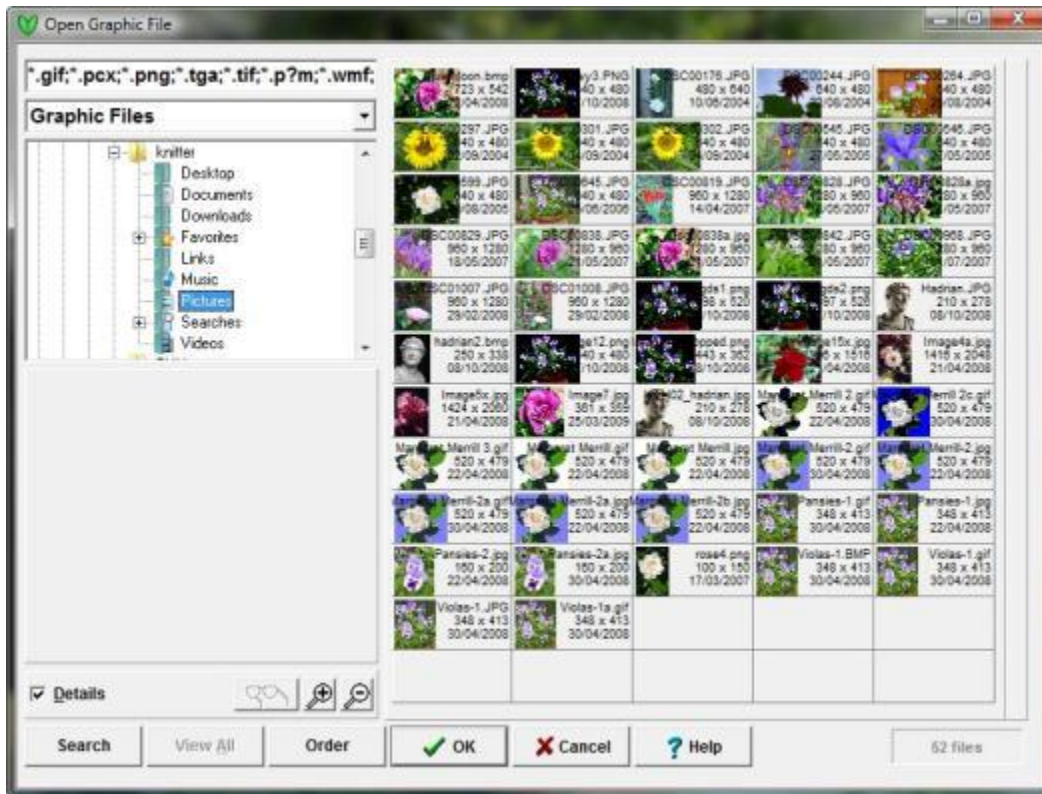
Help

Wherever you see this button, click on it for Help relating to the current task.

Graphics Thumbnails Browser

The Thumbnails Browser is accessed from the File menu. It functions in a similar way to the Stitch Designer Thumbnail Browser and offers ways of filtering and searching graphics which are not available in the ordinary Windows File Open dialogue.

To open the Browser, click on **File** and **Open**



- By default, the browser will open in the **My Pictures folder for the current user**. If you want to find images in another location, use the browser tree on the left to specify the folder you want.
- Thumbnails of all supported image files¹ are shown in the browser, with their file name.
- **Details**
- Place a tick in the box marked **Details** at the lower left of the dialogue, the thumbnails will also display the width and height in pixels and the date last saved.
- **Graphic Files**
- To filter according to file type, click on the **file types field** near the top left and select the file type from the drop down list.

¹ .bmp, .gif, .jpg, .pcx, .png, .tif, .ico, .tga, .wmf, as well as .pbm, .pgm and .ppm

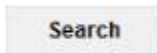
- When you select an image file, its name appears in the **filename field** at the top left of the dialogue and an enlarged thumbnail shows in the preview area.



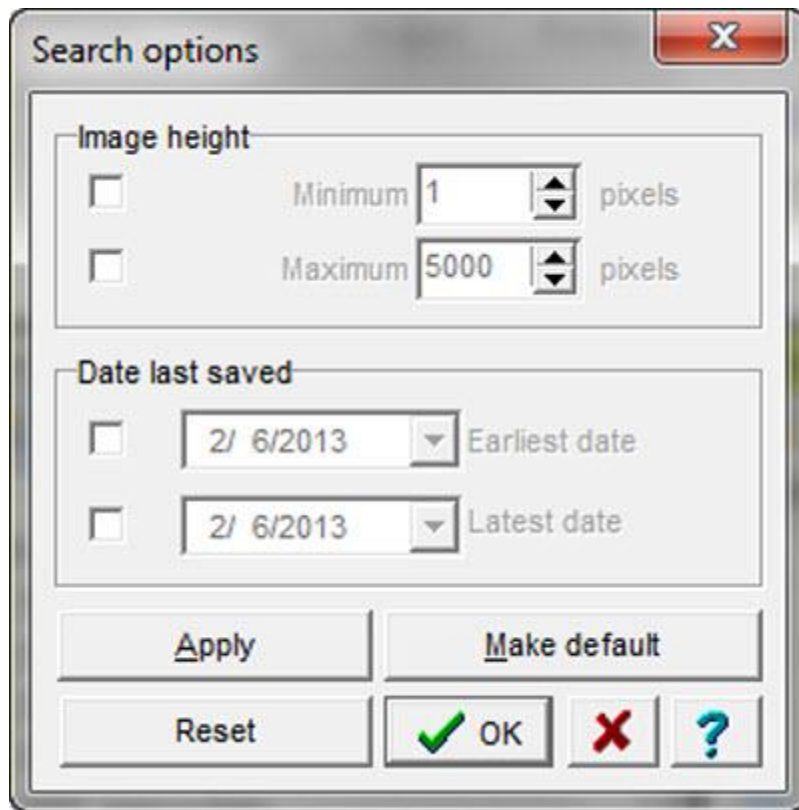
- If the **Spectacles button** becomes active, it means that a high resolution preview of a large image is available - click on the button to show it. If the button is grayed out, do not be concerned as this means that the preview is already showing at the highest possible resolution.



- Click on the **Zoom in button** to enlarge the thumbnails and display fewer to a row, and on the **Zoom out button** to shrink them and see more per row. Note that if the Details option is checked, the text may overlap the images.



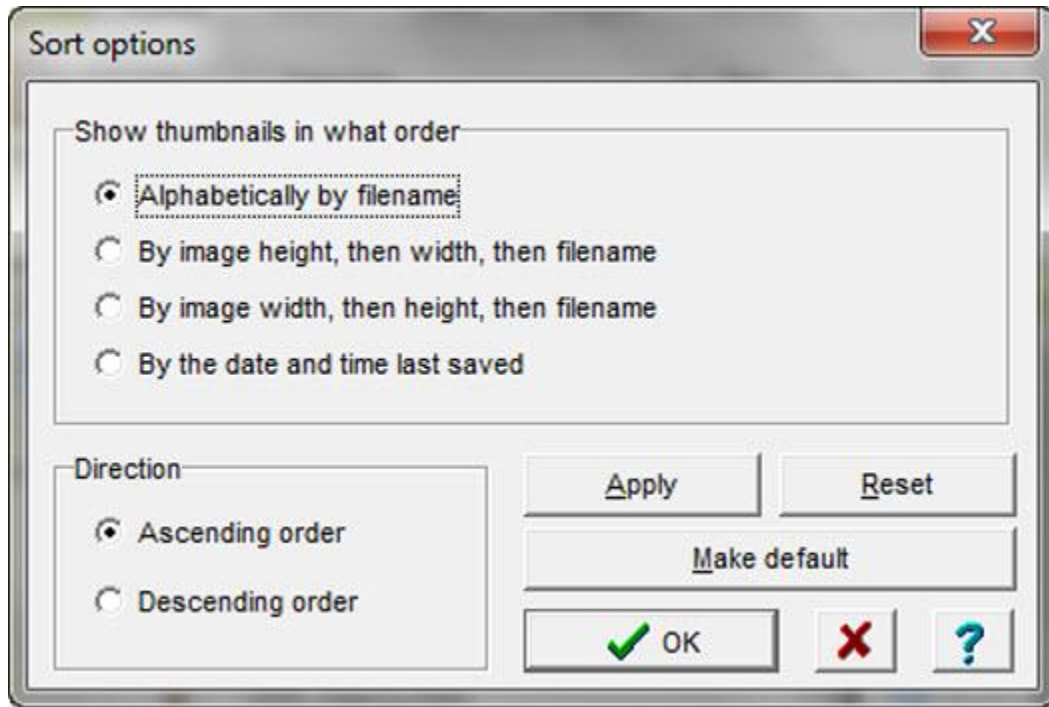
- Click on the **Search button** to search according to height in pixels, or by date saved. Note that the search will also take into account the file type, so to search through all the images it is important to make sure the file types field shows **Graphic Files**.



- Click on the **View All button** to clear the search results. Note that this will take into account the file type specified, so if you want to see all the files, make sure the file types field shows **Graphic Files**.



- Click the **Sort button** for sorting options.

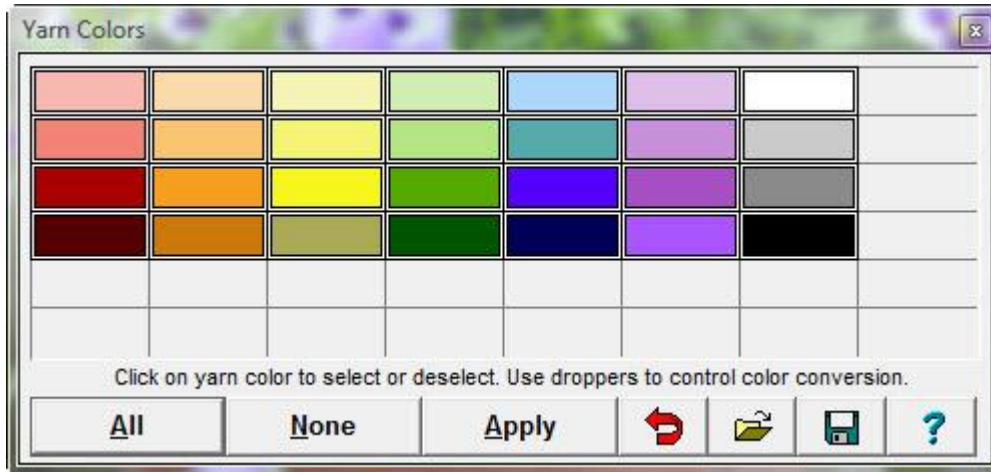


- Click on OK to open the selected image file in the Graphics Studio editing screen, or on Cancel to return to the Graphics Studio without opening an image.

Yarn Colors Palette



The Graphics Studio Yarns Palette is where you set up or map the image colors you want when you convert the image for knitting. Click on the **Yarn Colors Palette** button on the Tool Bar to open it, or from the menu bar select **View/Menu**.

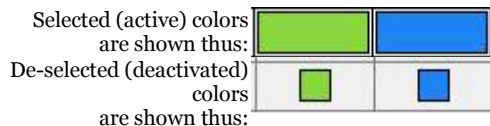


How DesignaKnit Uses the Yarn Colors Palette

DesignaKnit uses the Yarn Colors Palette as its reference when converting the image to a stitch pattern. In general terms, DesignaKnit matches as closely as possible the colors it finds in the image to the colors which have been made available in the Yarn Colors Palette.

You can override DesignaKnit's decisions and control how the colors are converted using some or all of the following tools or methods:

- Select the colors you want to use, and deactivate the ones you do not want - DesignaKnit ignores deactivated colors, but if you have earlier made changes to the settings with the Yarn Definition Tool or Color Mapping tool, these will be preserved in case you decide to re-activate the color(s).




- Choose colors from the image and add them to the Palette with the Yarn Definition Tool



- Map multiple colors from the image to one color in the Palette with the Color Mapping



These tools are used in conjunction with other options, such as the size of the Sampling Area in the grid, and Conversion Settings such as the number of colors in a row and the amount of bird's eye.

The **Undo** button  will undo the last change only.

Setting up the Palette

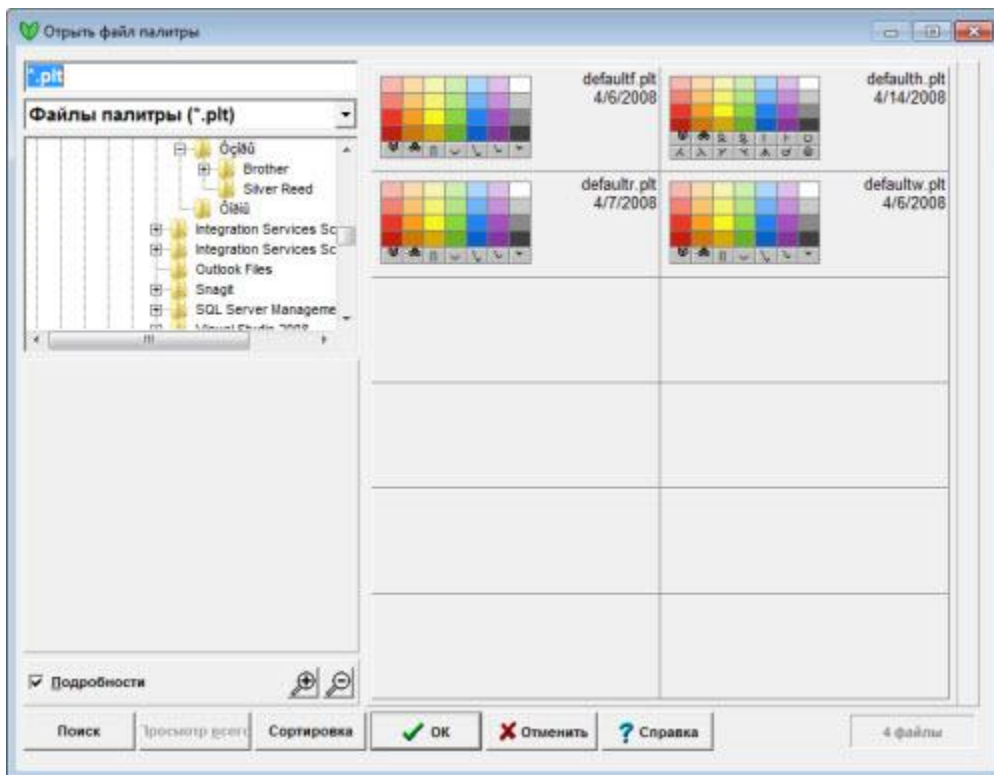
When you first load a graphic, the Yarn Colors Palette will contain the colors from the current Woolbox in Stitch Designer or, if you have arrived in the Graphics Studio directly from the opening screen, it will contain the default palette.

Using an existing palette

- If you want to load an existing palette, click on the File/Open button on the Palette to open the Stitch Designer Thumbnails dialog and choose a saved palette (.plt) file
- To select a palette from a saved stitch pattern, change the File Type to .stp so that you can load the palette associated with that stitch pattern.

N.B.: Any symbols in the palette file will not be imported to the palette- the Graphic Design Studio only deals with colors. If you want to convert colors to textures, or to add symbols to the colors, you can do this in Stitch Designer, after you've converted the image to a stitch pattern either via the Stitch Designer palette or by re-importing the file and choosing to add the symbols.

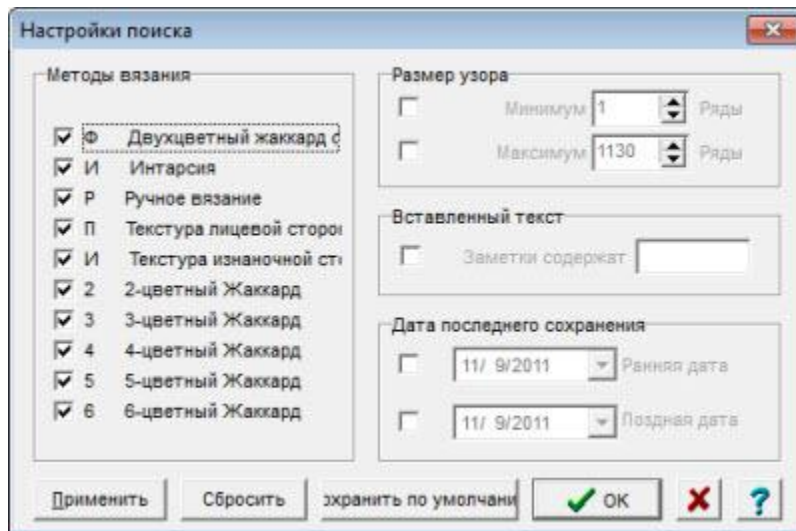
This will open the Thumbnails Browser in Palette mode, showing any saved palette files. Select the one you want, and click OK.



If you want to import a palette associated with a specific stitch pattern, use the drop down menu in the browser's file type field to change from Palette Files (.plt) to Ver 7/8 Stitch Patterns (.stp), select the pattern you want and click OK.



Click on the Search button to search for a file or files according to a variety of criteria:



- **Knitting methods:** to filter your search according to knitting method, check only those you wish to include. Palette files saved or exported from Stitch Designer will have an associated knitting method. The list will include all the methods available for your version of the program.

If you are looking for a palette exported from DesignaKnit Graphics Studio, you should make sure that all available methods are selected.

- **Pattern size:** to search by the length of the pattern, you can check either or both of the minimum or maximum number of rows in the pattern repeat. Palette files saved or exported from Stitch Designer will have a size in stitches and rows.
- **Embedded text:** if you have added information to the notes section, DesignaKnit will search for a word or text string if you tick this option and enter a search term or string in the 'Notes contain' field.
- **Date last saved:** limit the search according to the date or range of dates when the pattern or patterns were last saved.

Click on the arrow to the right of the date field to open a calendar. Use the arrows to flick back and forth through the months and click on a day to set the date, or click on Today to reset the current date.



Apply Search: click the Apply button to run the search, without closing the dialogue, so you can redefine the criteria while the search is active.

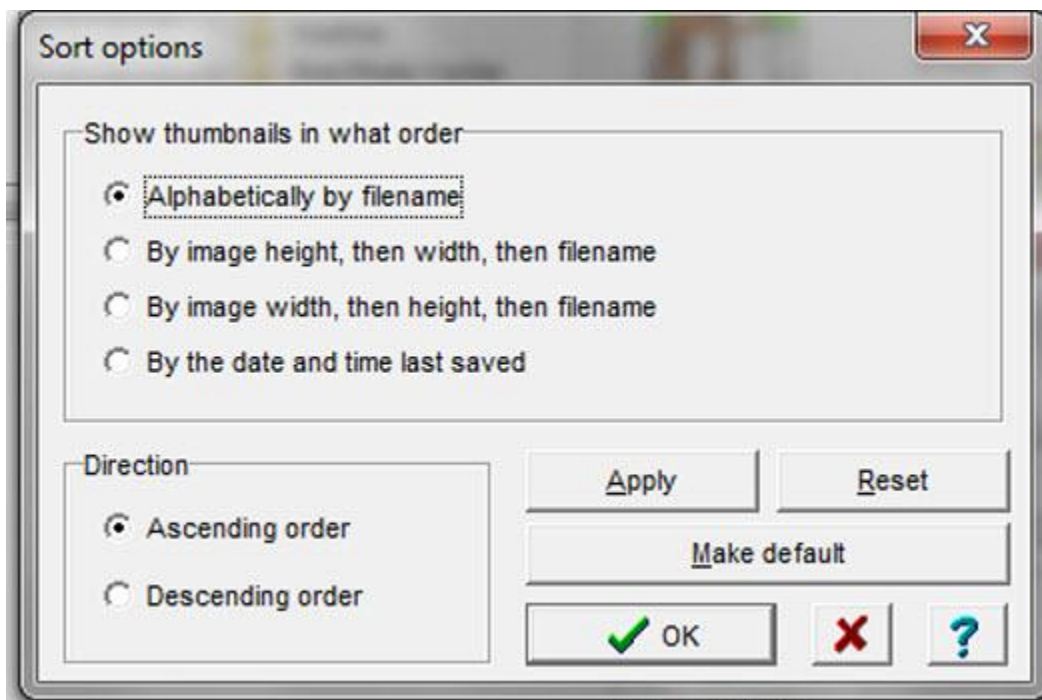
Reset: click the Reset button to clear all the search fields on the right and re-check all knitting methods.

Make default: If you want to keep your search criteria for another session, click on the Make Default button. The next time you click on Search, the dialogue will open with your saved settings. To clear them, click on Reset.

Click **OK** to run the search and close the dialogue. The thumbnails browser will now display only those files found by your search until you click on the **View All** button. If this button is not active, this means that there are no filters and all the files in the folder are already included.



By default, the thumbnails are listed in alphabetical order, but you may want to group your palettes or patterns in a different way. Click on the Sort button to view the options:



If you want to retain the option you have chosen so that the Thumbnails dialogue always sorts the files in this way, click on the **Make default** button - and if you later change your mind and decide to revert to alphabetical sorting, click on **Reset**.

Customizing the palette


You have a number of ways of setting up the palette for your graphic:


- You can deactivate any colors you don't want by clicking *once* on the color.
- You can bring back any color you want by clicking *once* on it.
- To start with a clear palette, you can deactivate all the colors by clicking on the **None** button. and then click once on each one you want to bring back into use.
- You can reinstate all the colors by clicking on the **All** button.
- If you now want to customize individual colors, *double click* on the color you want to change and edit either the HSL or the RGB values. Click OK to accept the changes.



- You can add a new color to the palette by clicking on an empty cell. This will open the Color Adjustment dialogue so you can specify the RGB or HSL values for the color you want.
- To apply a specific color from the image to the palette, use the Yarn Definition tool to pick up the color from the image and drop it onto the palette.
- To map one or more colors from the image to one color in the palette, use the Color Mapping Tool to pick up the color from the image and drop it into the image. Use this tool when you want the colors in the image to change to the designated ones in the palette.

Preview the color changes

Clicking on the Apply button automatically activates the Preview button . To remove the preview, click on the button  to deactivate it.

You can click on the  button at any time to preview the conversion.

Please note that the preview will take into account all settings configured in the Grid Settings and Conversion Settings dialogues, as well as any modifications to the palette.

Saving your palette



DesignaKnit will prompt you to save your settings when you exit the Graphics Studio, and if you opt to do so, then the palette attached to the current graphic will be saved with the image, so if you open it again, you will have the same palette you were working with.

There are distinct advantages, however, to saving the palette as a separate palette file for future use. DesignaKnit only saves the settings for the last 25 files you have opted to save the settings for, so if you are heavy user of the Graphics Studio, it will not be long before the settings for the current graphic are overwritten, though of course the graphic itself will still be saved.

If you save the palette, you will not only be able to recall it at any time for this and any other image, but you will also be able to apply it to any stitch pattern you design in the future. Click on the **Save As** button to save the file as a palette file.

Color Mapping Tool



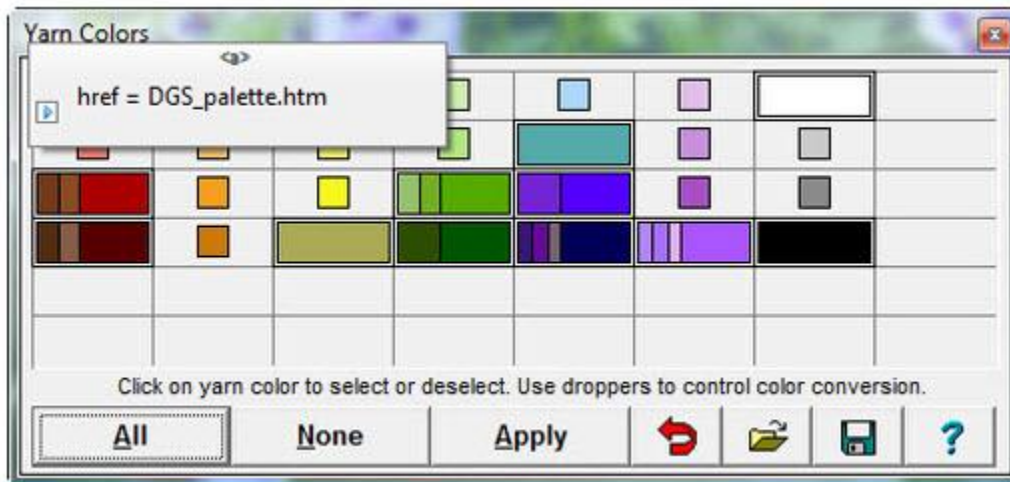
The Color Mapping tool is used to tell DesignaKnit that a particular color in the Yarn Colors Palette must be used for a specific color in the image.

Unlike the Yarn Definition tool, which changes yarn colors to match the image, this tool may be used to apply any color in the Yarn Colors Palette to any color in the image. The tool can be used to map several different image colors to a single Palette color.

The mapping tool may be used in conjunction with the Yarn Definition tool. Having identified the major colors in a picture and converted the yarns to match with the Yarn Definition tool, the Color Mapping tool can then be used to map near-matches to specific colors. The mapping is general and applies to the whole conversion area.

The tool can also be used to create effect by mapping quite differently colored yarns to the image, thus overriding DesignaKnit's inclination to match colors as nearly as possible. If the image being processed was, for instance, a photograph of a tiger, by mapping the tawny colors of the animal to different colors in the Woolbox, the tiger could become bright pink or purple. In this instance, the Woolbox colors would have to be set up first, either by double clicking in the yarn to open the Color Adjustment dialogue, or later on in Stitch Designer, because it is unlikely that those colors could be found in the image itself.

Activate the tool and identify the color to be mapped from the image. Clicking on it will display a color preview in the area below the button, along with its RGB values. When the desired color has been found, click with the tool in the Yarn Colors Palette over the yarn that is to be used to knit that color. The Palette will display the image color on the left of the color block.



□

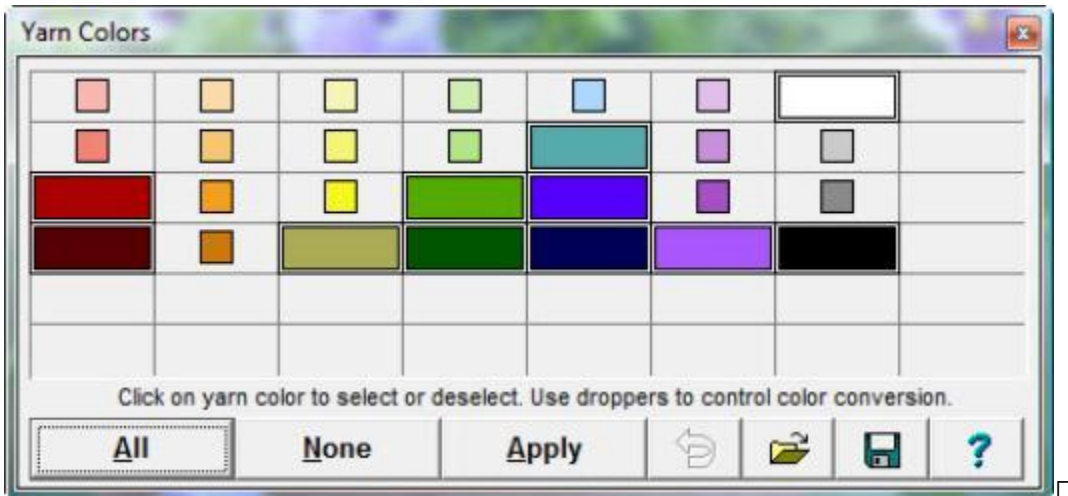
Yarn Definition Tool



Use this dropper to take specific colors from the image file to the Yarn Colors Palette.

First, in the image, click on the color you want, then click in the Palette, where you want the color to display. If you click on a deactivated color, DesignaKnit will reactivate it as the new color, and if you click on an already active color, then that color will change to the one you have 'dropped' onto it. If the color from the image already exists in the Palette, DesignaKnit will tell you and, if the color is not already active, will bring it back into the Palette.

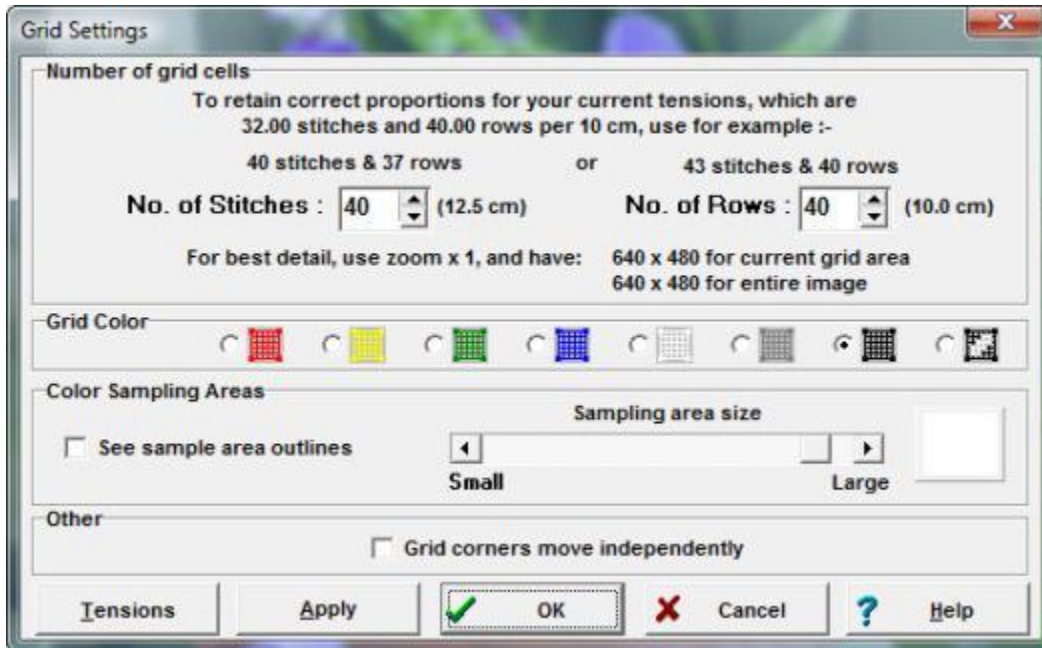
If you want to save your selection of colors for later use, click on the Save button on the Yarn Colors Palette. You will be prompted for a filename, and the palette will be saved with a .plt extension, so it can be opened again either in the Graphics Studio or in Stitch Designer.



Grid Settings



Open this dialogue by clicking on the **Grid Settings** button on the tool bar or selecting **Grid Settings** from the **File Menu**.

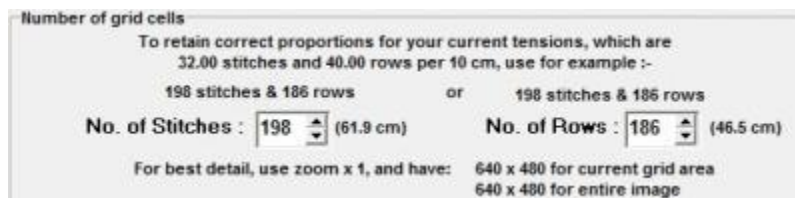


Number of grid cells:

(If this is a new file, or one which has been saved without modifications to the default settings, the dialogue will open with the default settings).

The dialogue shows:

- **Correct proportions at the current tension** - if this is not the tension you want to work with, then click on the Tensions button at the bottom left of the dialogue and alter the settings.
- **The number of stitches and rows required to retain the correct proportion** according to a) the current tension and b) the number of stitches and rows currently entered below this information. These displays will update and adjust themselves to any changes you make to the settings.



- **Enter the number of stitches and/or rows**, either by over-typing the current values, or by clicking on the up or down arrows until you reach the desired number. Then adjust the other dimension until you reach values which match, or nearly match, the recommended settings.

- **Best Detail:** these values indicate the number of pixels in the image and/or in the current selected area. This is probably not suitable for knitting because unless the tension matches the number of rows to the number of stitches, using these values will result in a distortion of the image when it is converted, so you should take into account the advice given regarding retaining the correct proportions.

If, however, you are converting the graphic for other purposes, such as cross stitch or tapestry, and you require a square grid, these values are the ones to use.

The **Zoom factor** is also shown here - zooming into a graphic increases the number of pixels both on the screen and within the grid, therefore providing a way of enlarging the pattern. Please note that the conversion generally works better when the scaling factor is a whole number - so select from the Zoom menu **Zoom x 1** for full size (i.e. 100%), **Zoom x 2** for 200% and so on.

- **Grid Color:** for clarity, choose a grid color that will stand out against the image. The far right option is good where any single color may match areas of the image too closely, as this one will adapt automatically to contrast with the image.

Note that the color you select for the grid will also be the color used by the selection box.

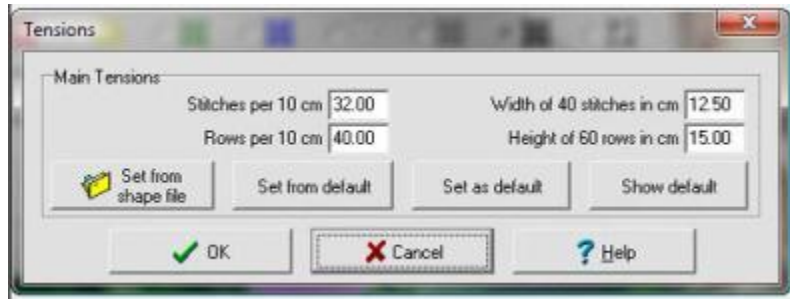
- **Color Sampling Areas:** Within the grid, it is possible to set a smaller area for color sampling. For example, a single grid cell (stitch) may enclose an area with pixels of different colors. As the finished result must have only one color for each stitch reducing the sampling area can speed up the process. However, enlarging the area can produce a more accurate result.

Defining the sampling area is essential for scanned charted designs in order to eliminate the lines of the chart. Having set the Grid to a number of stitches and rows which matches the chart, and placed the grid reasonably accurately over it so that the grid lines match those of the chart, reduce the sampling area to show only the color or symbol within the chart cell and exclude the cell outlines.

Drag the slider towards Small or Large to set the sampling area: the example to the right of the slider will display the result. Click on See sample area outlines to see these areas within the grid. When this box is checked, even if the grid is not displayed, the sampling areas remain in view until it is unchecked. This is useful when doing detailed color mapping, as the grid lines can be removed thus giving a clearer view of the sampling cells.

Click on **See sample area outlines** to see these areas within the grid. When this box is checked, even if the grid is not displayed, the sampling areas remain in view until it is unchecked. This is useful when doing detailed color mapping, as the grid lines can be removed thus giving a clearer view of the sampling cells.

- **Grid Corners Move Independently:** checking this box means that each corner of the grid can be moved independently of the others, enabling the grid to be changed from a rectangle to any quadrilateral. This is particularly useful for de-skewing an image.
- Click on the **Tensions** button to open the tensions dialogue



If you want to change the current tensions, you can do this in one of these ways:

Enter new tension values

Depending on how you measure your tension sample, either enter the number of stitches and rows to 10 cm / 4 inches or measure the width and length of 40 stitches and 60 rows in your current. Whichever system you choose, the other will update automatically.

Set from default

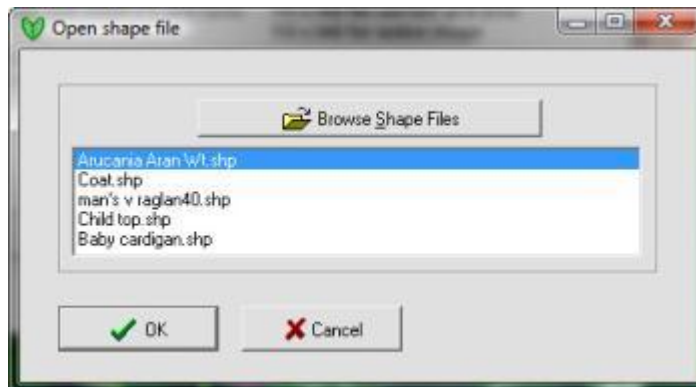
Click on this button to call up the default settings (Click on the Show Default button to view the current default tension settings)

Set as default

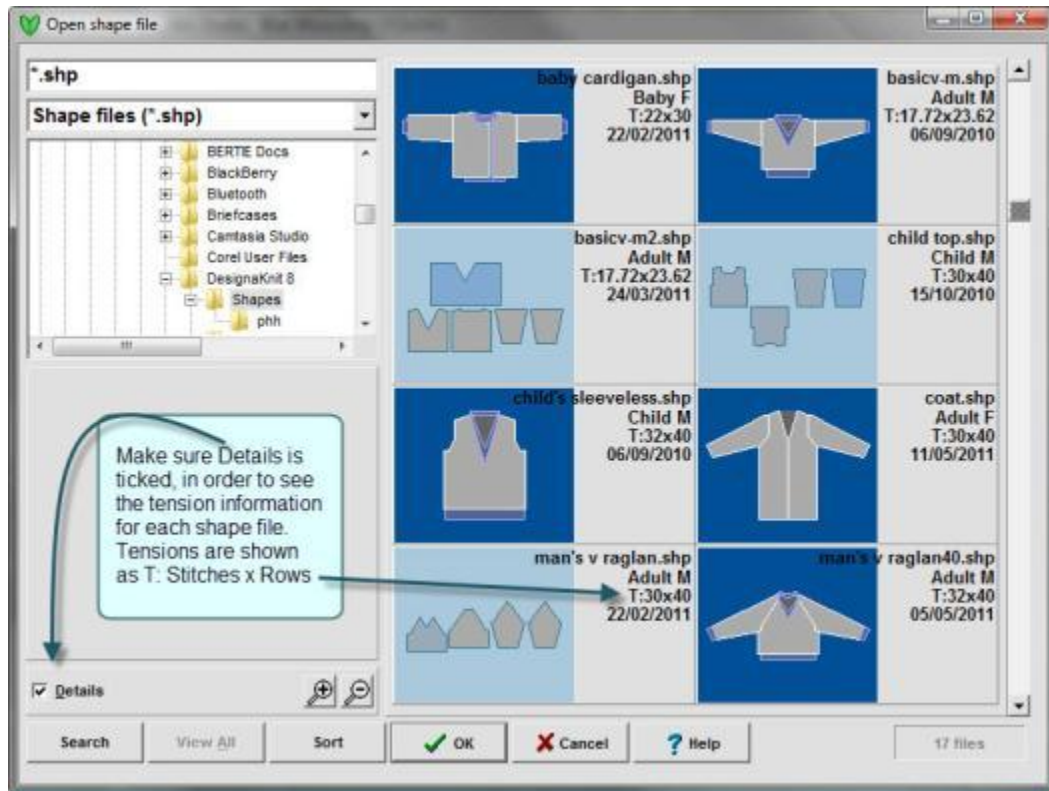
This changes the values you set in the current settings fields to the new default, which will become the default tension settings throughout the program.

Set from Shape file

Use this option to apply the tension setting from a saved shape file. The next stage dialogue offers a list of the last five shape files you have opened, so if you know it is one of these you want, select it and click OK.



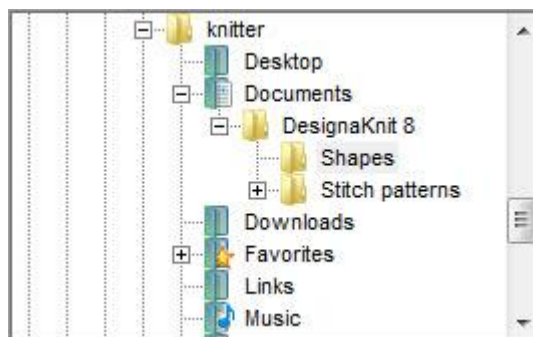
If the file you want is not shown, or you want to see the tensions associated with any of your shape files, click on the Browse Shape Files option, which opens the Shapes Thumbnails Browser.



Scroll through the shape files and click on the one you want - if you know the name, you can enter it into the File Name Field and the browser will jump to that location - just typing in the first letter will jump to the first patterns starting with that letter.

Folder Tree

Your shape files are stored in the DesignaKnit section of your Documents folder. If you have saved them elsewhere, on removable media such as a USB flash drive, for instance, you can navigate there using the folder tree. Use the scroll bar at the right of the tree to find other folders, and click once to open a folder.



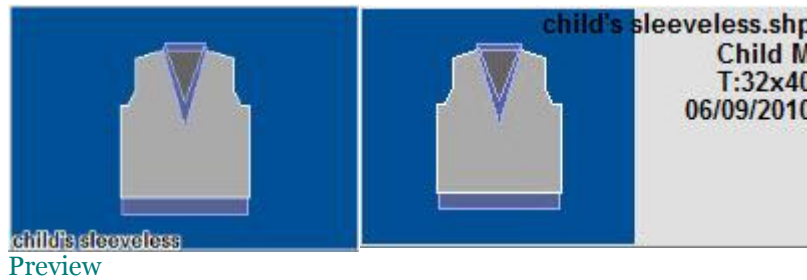
Details

Details

Tick this option to display detailed information about the pattern or palette files.

With this option unchecked, only the file name and extension are shown, but when this option is checked, the Standard Garment Styling type is shown for files started

in that part of the program or the number of pieces for those created entirely in Original Pattern Drafting. The tension in Stitches x Rows and the date the file was last saved are also shown.



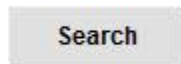
When you click on a file, it is shown in the preview area.

Zoom

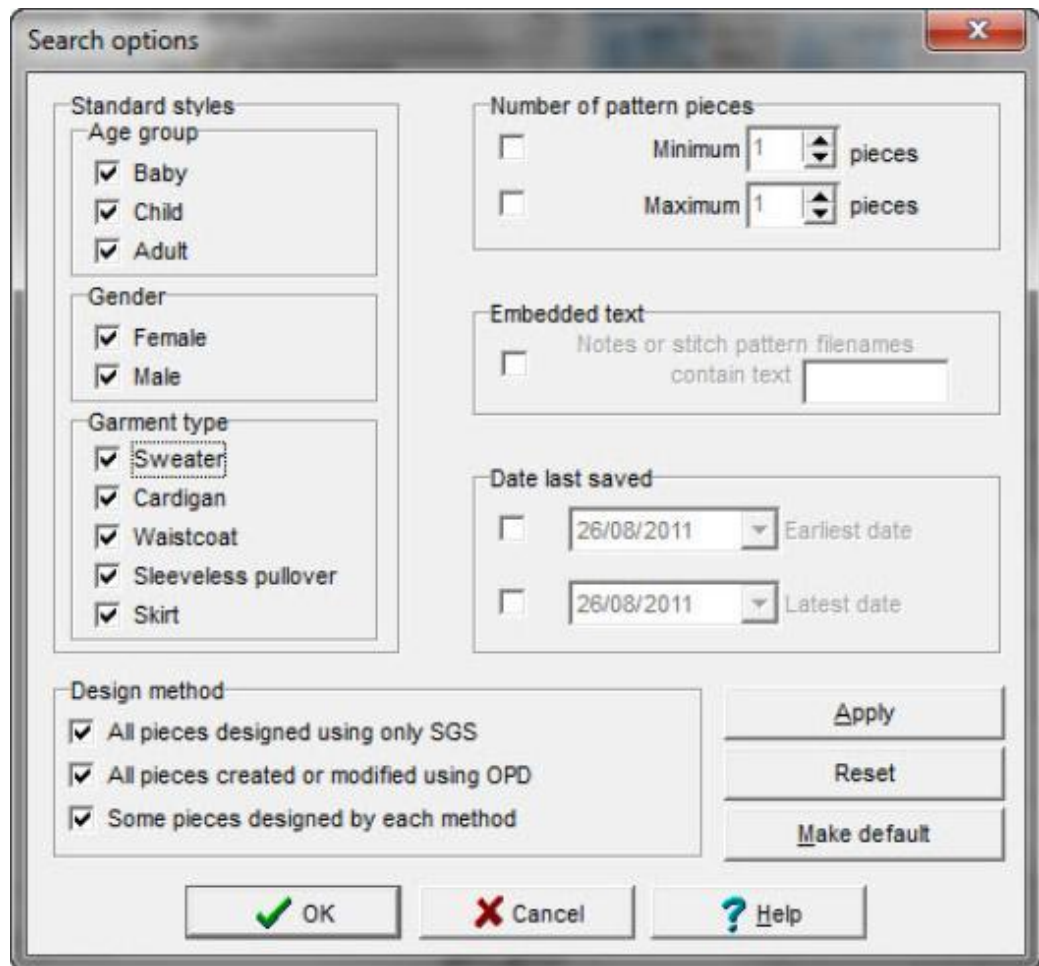


Click on the Zoom in button to enlarge the thumbnails and display fewer to a row, and on the Zoom out button to shrink them and see more per row. If the Details option is unchecked you can fit a larger number of images per row than when the information is displayed.

Search



Click on the Search button to search for a file or files according to a variety of criteria:



- **Standard styles - Age group:** to filter your search according to an age group, check only those you wish to include.
- **Standard styles - Gender:** if you want to search for patterns for only males or only females, tick the category you want.
- **Standard styles - Garment Type:** tick the Standard Garment types you want to include in your search.
- **Design method:** specify which of the pattern drafting sections of the program were used in creating the file
- **Number of pattern pieces** - set a maximum and minimum number and tick the boxes on the left if you want DesignaKnit to take these factors into account when searching
- **Embedded text:** if you have added some notes to the pattern, you can search for a key word or phrase.
- **Date last saved:** limit the search according to the date or range of dates when the pattern or patterns were last saved.

Click on the arrow to the right of the date field to open a calendar. Use the arrows to flick back and forth through the months and click on a day to set the date, or click on Today to reset the current date.



Apply Search: click the Apply button to run the search, without closing the dialogue, so you can redefine the criteria while the search is active.

Reset: click the Reset button to clear all the search fields on the right and re-check all age group, gender and garment type options.

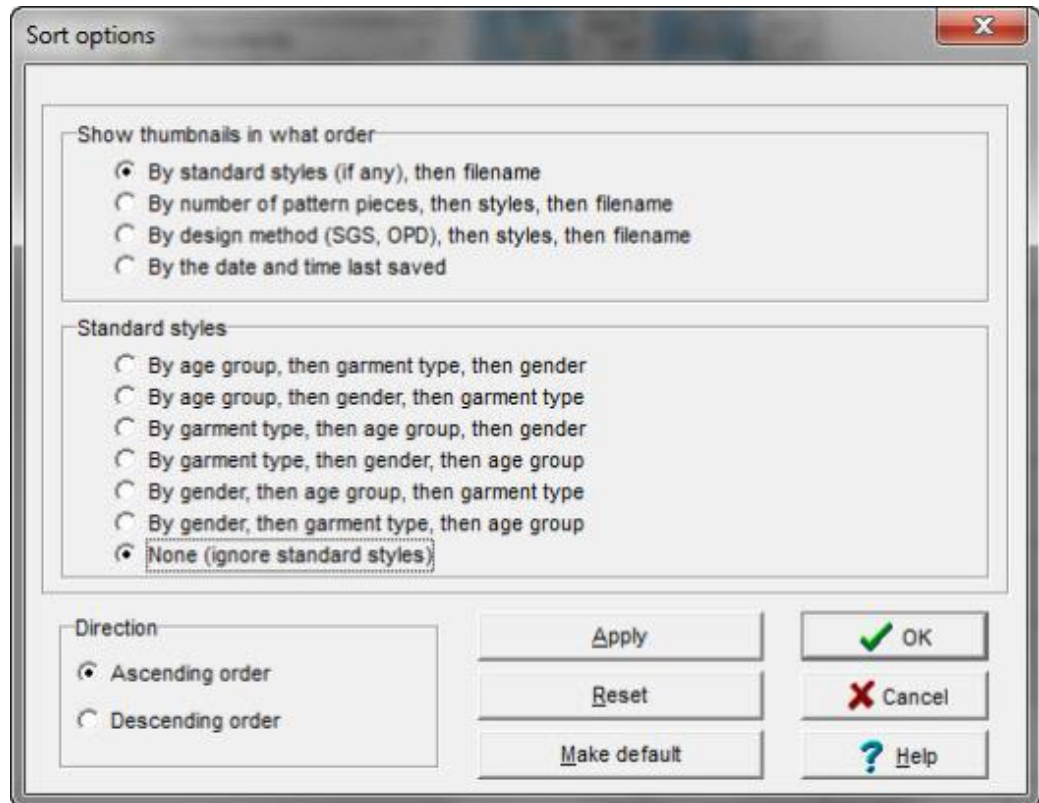
Make default: If you want to keep your search criteria for another session, click on the Make Default button. The next time you click on Search, the dialogue will open with your saved settings. To clear them, click on Reset.

Click **OK** to run the search and close the dialogue. The thumbnails browser will now display only those files found by your search until you click on the **View All** button. If this button is not active, this means that there are no filters and all the files in the folder are already included.

Sort



By default, the thumbnails are listed in alphabetical order, but you may want to group your patterns in a different way. Click on the Sort button to view the options:



If you want to retain the option you have chosen so that the Thumbnails dialogue always sorts the files in this way, click on the **Make default** button - and if you later change your mind and decide to revert to alphabetical sorting, click on **Reset**.

- Click on **Apply** to apply any changes without closing the dialogue, **OK** to apply the changes and close the dialogue, or on **Cancel** to close the dialogue without making any changes.

After you have configured the Grid Settings, you can use the Grid Display button to toggle the grid

on  or off  at any time.

Selection Tool



Use this tool to draw a selection box around the area of the image you want to convert.

The selection box is always active - by default the entire image is selected, so you also have the option of moving the corners to the desired position.

When you convert the graphic to a stitch pattern, only the area within the selection box will be converted. You must use the Grid Settings Dialogue to set up the number of stitches and rows represented by the selected area.

To remove the selection box from a selected area, click once outside the box to send it back to its default position, or use the menu bar to choose **Edit/Select All**.

The corners can be moved independently. You can change the default in the Grid Settings dialogue, but you can override the current setting by holding down the CTRL key as you move a corner.

You can also use the tool to crop the image: draw the box around the area you want to keep, and then select menu item **Image/Crop**. You can then save this as a separate graphic file if you wish.

Zoom



Use the Zoom buttons on the Tool Bar to change the zoom levels by a factor of 10 per cent with each click.

Alternatively, use the Zoom menu to control the zoom level:

Zoom in or Zoom out

Alter the current Zoom level by a factor of ten per cent.

Zoom x 1, 2, 3 or 4

Zoom to specific levels of 100% to 400%.

If the size of the image exceeds the workspace area, scroll bars will appear at the bottom and the right of the window.

Fit to width or Fit to height

These options will fit the image to the current workspace, according to the chosen dimension, keeping the aspect ratio correct, which may result in scroll bars appearing either at the bottom or the right of the window in order to accommodate the other dimension.

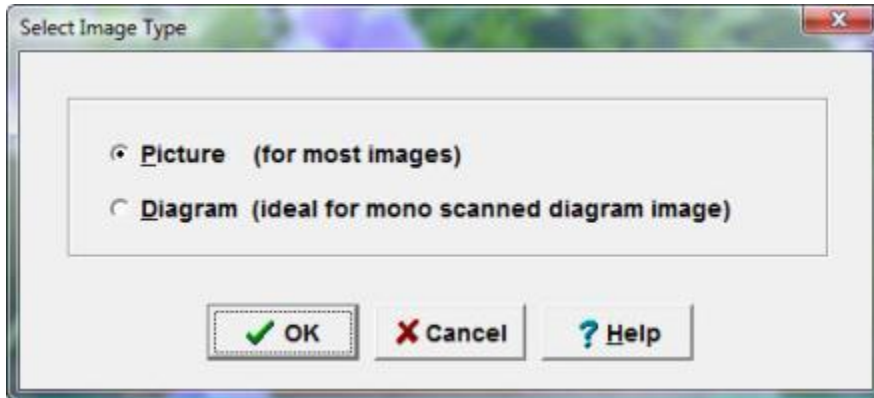
You can use the Zoom controls to scale the graphic for conversion. Check the Grid Settings dialogue to see the number of stitches and rows DesignaKnit recommends for conversion at that zoom setting.

Conversion Settings



Image Type

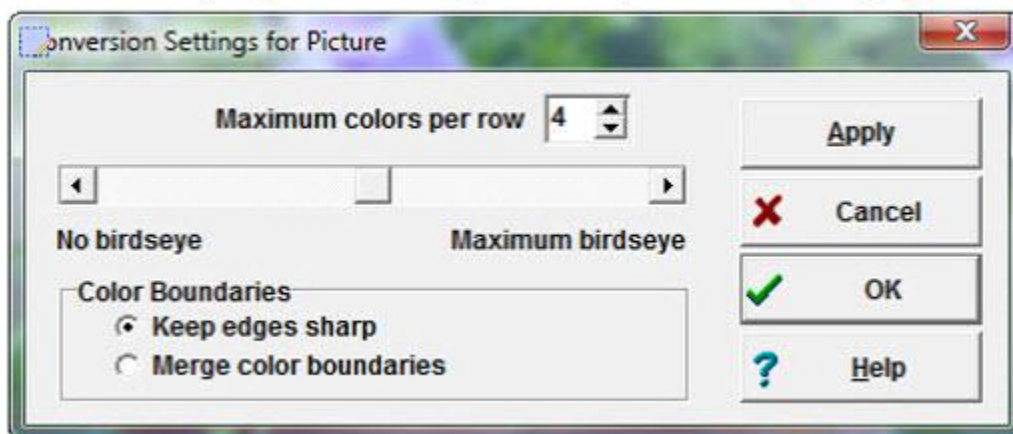
DesignaKnit deals with two kinds of conversion: Pictures², and Diagrams³. The Diagram option is particularly suited to monochrome scanned images of graphs or punch cards. To select the image type you are converting, select **Image/Type** from the menu bar.



The Conversion Settings Dialogue will offer options appropriate to your selection of Picture or Diagram.

Converting A Picture

This is the default setting for DesignaKnit Graphics Studio, so unless you have changed the setting for the current image, you should not need to confirm the Picture setting. If you need to change the setting, click on the **Image** menu, select **Type** and then change the selection to **Picture**.



²are images which will be converted with more than two colors, even if the finished conversion only has two colors in any one row.

³ which are images which will have only two colors in total

Maximum colors per row

This will be determined by the eventual knitting method, but if your image is a complex one with many colors, you may find it useful to set this to the maximum of 16 colors per row at the start of the conversion process as this gives you the maximum flexibility when mapping colors to yarns. You can change the settings at any time during the process.

Bird's-eye

This setting is useful when you are working with photographs or other images which do not have sharply defined color areas. Bird's-eye enables the program to give the effect of more colors in a row than there actually are, as well as merging outlines.

Where the colors of the image match exactly, or very closely, the colors in the current palette, DesignaKnit will set those first. According to the amount of bird's-eye set in this dialogue, where there are areas which do not match so well to the color palette, DesignaKnit will produce a “dithered” color, as close as it can get, to the image. The actual colors used will also depend on the number of colors in a row and, therefore, the colors available for it to use in that row.

Tips for bird's-eye settings

- It is better to finalize the bird's-eye setting after the palette has been set up. As with the other dialogues in this sequence, it is not necessary to have an exact setting to start with. The default setting is 50% bird's-eye but this can be altered at any later stage to achieve the desired result.
- The more exactly the main color areas match the palette, the better bird's-eye will work. Read the section on the DesignaKnit Graphics Studio Woolbox (paragraph 10.6) which explains the palette issues.
- It is better to reduce the image colors used from the palette to a realistic number – preferably related to the actual yarns to be used – before finalizing the bird's-eye setting.
- If an image has a small area of intense color against larger areas of other colors, for instance a small bright flower in the foreground of a landscape in muted shades, DesignaKnit could match it exactly, or very nearly, to the current Woolbox, and may choose that color to be included in the whole row thus reducing the number of colors used to form the main picture.

You can control the way in which DesignaKnit uses the Yarn Colors palette by using the Color Mapping Tool and mapping the color in the image to one of the selected colors in the Yarn Color Palette. Small areas of colors not otherwise used in the stitch pattern are better added later by Swiss darning over the finished work, in which case they should not be included in the conversion.

Color Boundaries


Select the option best suited to the image.

- **Keep the edges sharp** is appropriate for bold designs with well-defined areas of color,
- **Merge the color boundaries** is suited to images where the color areas are not well defined, such as photographs. Choose this option to make best use of the bird's-eye settings.

Apply the settings

Click the **Apply** button for a preview of your adjustments, but bear in mind that unless the grid has been set up for the correct number of stitches and rows in the Grid Settings dialogue, the preview will not be accurate.

Clicking the Apply button will switch on the **Conversion Settings Preview button**  to deactivate it.

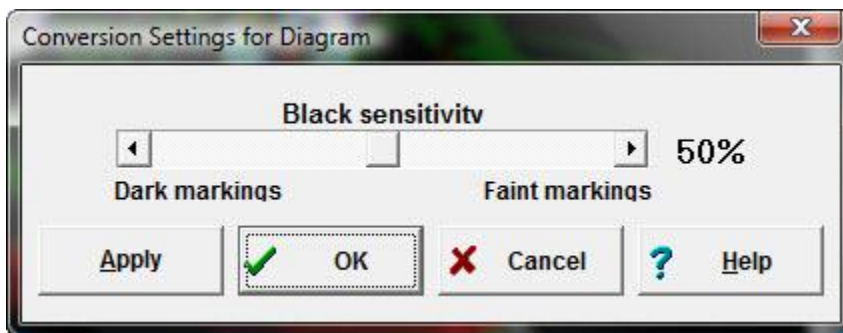
Once you have configured the Conversion settings, you can click the preview button  at any time.

Click **OK** to apply any changes and close the dialogue. Click **Cancel** to close the dialogue without applying any changes.

Converting A Diagram

Open the image in the usual way. Click on **Image** on the menu bar and select **Type** and change the selection to **Diagram**.

When you click on the Conversion Settings button you will see this dialogue:



Use the slider to determine the sensitivity to black markings on the image. This is particularly useful when converting a chart made up of symbols as the density of the black in this symbol ● far exceeds that in a symbol like this ✎. By altering the sensitivity to black, in conjunction with the sampling area in the Grid Settings dialogue, you can ensure that all the symbols are recognized and converted to the darker color.

Please note that this is intended for converting a *chart* to *two contrasting colors*, so that the symbols will be converted to one of the colors, it is not the same as Optical Character Recognition and will not convert your scanned chart into KnitWriteDK symbols. If you later want to convert those colors into stitch type symbols, you can do this in **Stitch**

Finish Conversion

When you have finished working in the Graphics Studio, you can take the following choices:

Finish The Process By Converting The Graphic Into A Stitch Pattern


Click on the **OK button** on the Tool Bar.



DesignaKnit will then ask if you want to save the current settings for this image file.

If you choose **Yes**, the next time you open the file, you will have the same Grid and Conversion settings, the selection box will be in the same position and the palette you have set up will be the same. You can save the settings for 25 image files, after which they will be overwritten in the order in which they were last saved - oldest first. You can save the palette permanently via the Yarn Colors dialogue, but not the other settings.

Note that if you pasted the graphic into the workspace, then you must save it first as a graphic file,

either by clicking on the **Save button**  on the Tool Bar, or selecting **File/Save graphic as**.

If you choose **No**, the settings will not be saved.

Click **Cancel** to return to the Graphics Studio without converting the image.

Whichever option you choose, DesignaKnit will take you into Stitch Designer. Your converted graphic will be in the work space, and the next dialogue will ask you to confirm the Knitting Method.

For Machine Knitting, confirm the machine to be used and choose the Method from the drop-down list. Click on the Setup button if you need to make changes.

For Hand Knitting, choose Flat or Circular knitting and select the background stitch you want for the grid, then if the chart is to be read from left to right for the first (bottom) row, tick that box. If the first row is the 'wrong' side, then tick that box too.

When you have finished, click on OK to accept the changes, or Cancel to cancel any changes you made and accept the default method.

The converted graphic is now ready for any fine tuning you need to do in Stitch Designer.

Return To Stitch Designer Without Completing The Conversion

Click on the **Cancel button** on the Tool Bar.  or select **File/Exit**.

DesignaKnit will give you an opportunity to change your mind and ask if you want to convert the image now, but if you select No, you will be taken directly to Stitch Designer.

Click **Cancel** to return to the Graphics Studio,

Wizard



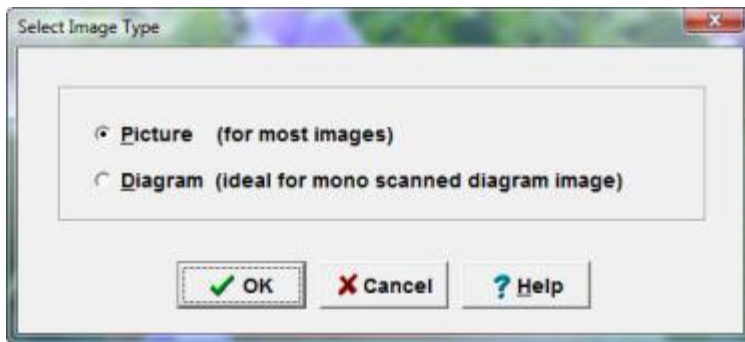
This is a useful tool for guiding you through the conversion process. If you don't want to tackle the dialogues in the order in which the Wizard presents them, you can cancel at any time and invoke the appropriate dialogue when you want it.

Note that if you only intend using a portion of the open graphic for conversion, you should draw the selection box around the area to be converted before starting the Wizard.

Once you have opened a graphic file, or pasted an image into the Graphics Studio, if you click on the Wizard button, you will be presented with the conversion options in this order:

Stage One: Image Type

Decide whether the image is a **Picture**⁴, or a **Diagram**⁵. The **Diagram** option is particularly suited to monochrome scanned images of graphs or punch cards. To change the image type you are converting, select **Image/Type** from the menu bar.



If you have chosen **Picture**, click here for the next stage.

If you have chosen **Diagram**, click here for the next stage.

⁴This is an image which will be converted with more than two colors, even if the finished conversion only has two colors in any one row.

⁵, which is an image which will have only two colors in total

Wizard

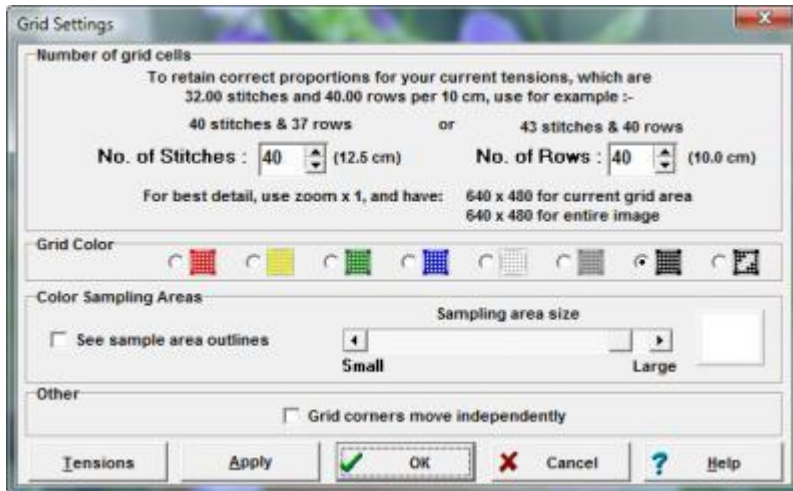


Picture Stage Two: Grid Settings

Use this next dialogue to determine the number of stitches and rows for the conversion area.

You can also set the grid color, the color sampling area and set the grid corners to move independently if you need to de-skew the image.

For a more detailed description of how to use the dialogue, [click here](#).



[Click here](#) to follow the Wizard to the next stage.

[Click here](#) to start again.

Wizard

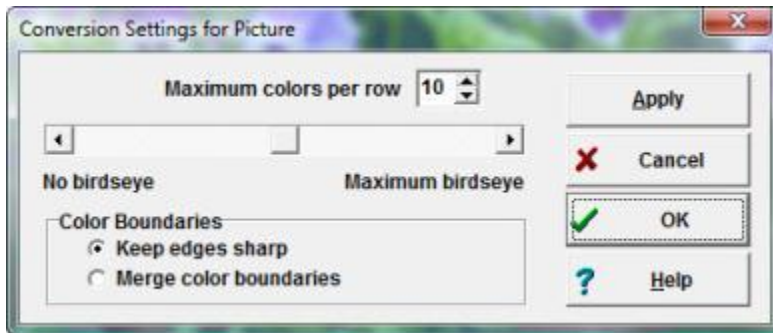


Picture Stage 3: Conversion Settings

Use this dialogue to set:

- the number of yarns per row. If the image is a simple conversion, you can set this to the final value at the outset, but you may find that it is helpful initially to set the number of yarns to a high number (the maximum is 16) at the outset and adjust this later, which will give you more freedom to convert the image colors in the best way.
- the amount of bird's-eye(if any) to use to give the illusion that there are more colors
- the type of color boundary - sharp for images with clearly defined colors, or merged. Use the latter to make the best of the bird's-eye settings.

For a more detailed description of how to use the dialogue, click [here](#).



Click [here](#) to go on to the next stage.

Click [here](#) to go back to the previous stage.

Click [here](#) to start again.


Wizard



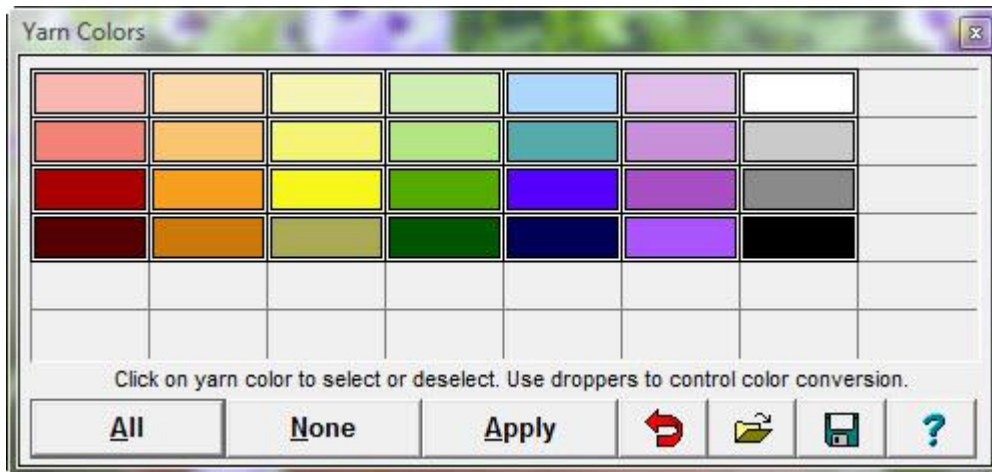
Picture Stage 4: Yarn Palette

The Yarn Colors palette is the final dialogue presented by the Wizard. .

If this is a new session, or if you have been working with the default palette in Stitch Designer, you will see the default palette here too. If you have been working with a modified palette in Stitch Designer, then you will see that palette. You can then either modify the palette or click on the File

button  to open a previously saved palette or palette associated with an existing stitch pattern.

For a detailed explanation on how to modify the Yarn Colors palette, [click here](#).



If you decide to abandon the Wizard at any point and cancel the current dialogue, the Yarn Colors palette will open.

[Click here](#) to go back to the previous stage.

[Click here](#) to start again.

Wizard

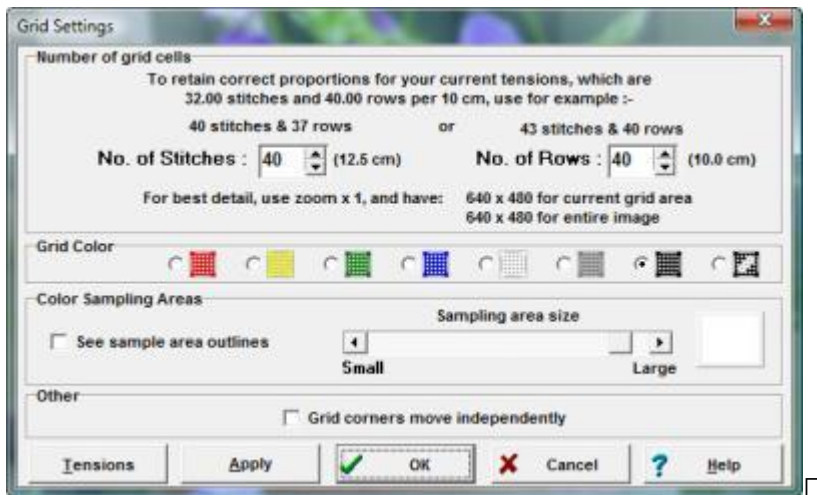


Diagram Stage Two: Grid Settings

Use this next dialogue to determine the number of stitches and rows for the conversion area.

You can also set the grid color, the color sampling area and set the grid corners to move independently if you need to de-skew the image.

For a more detailed description of how to use the dialogue, click [here](#).



Click [here](#) to follow the Wizard to the next stage.

Click [here](#) to start again.

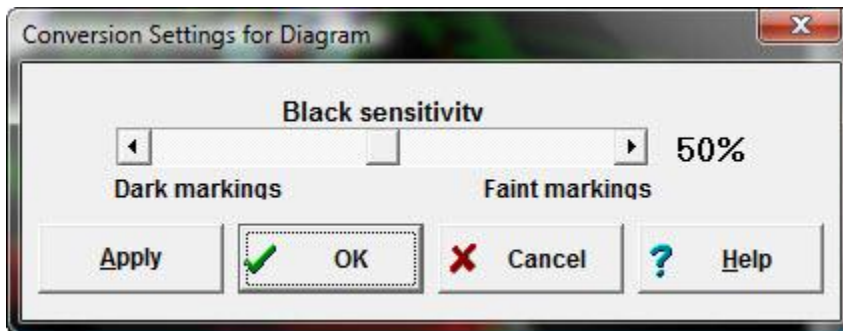
Wizard



Diagram Stage Three: Conversion Settings

Use this dialogue to determine the sensitivity to the depth of color or blackness of the markings on the chart or diagram.

For a more detailed description of how to use this dialogue, [click here](#).

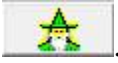


[Click here](#) to go on to the next stage.

[Click here](#) to go back to the previous stage.

[Click here](#) to start again.


Wizard



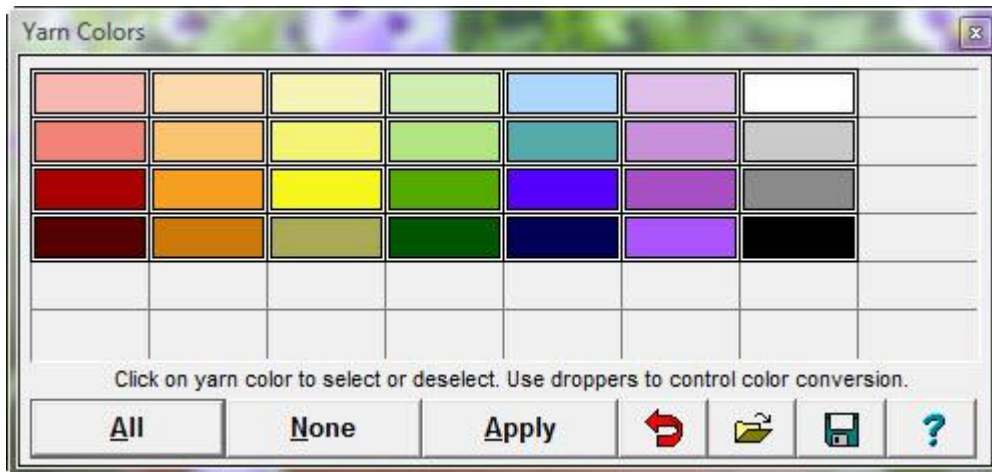
Picture Stage 4: Yarn Palette

The Yarn Colors palette is the final dialogue presented by the Wizard. .

If this is a new session, or if you have been working with the default palette in Stitch Designer, you will see the default palette here too. If you have been working with a modified palette in Stitch Designer, then you will see that palette. You can then either modify the palette or click on the File

button  to open a previously saved palette or palette associated with an existing stitch pattern.

For a detailed explanation on how to modify the Yarn Colors palette, [click here](#).



If you decide to abandon the Wizard at any point and cancel the current dialogue, the Yarn Colors palette will open.

[Click here](#) to go back to the previous stage.

[Click here](#) to start again.

Credits

System design Matthew Bragg & Cilla Mann
Software design & programming Matthew Bragg & John Hartley
SilverLink 4 design & firmware Jos Timmermans
SilverLink 5 design & firmware Justin Bernard / Davlec Ltd.
Consultants Cilla Mann, Jos Timmermans, Karen Kuranda, Rita de Jong, LouLou Pirotte, Carol Hocknel
Manual and Help authors Karen Kuranda & Cilla Mann
Tutorials Karen Kuranda
KnitWriteDK TrueType font author Cilla Mann
Roosmalen 1 TrueType font author Jacqueline Heijdemann / Knitdesign

Soft Byte Ltd wishes to acknowledge the following individuals for their contribution of stitch patterns for DesignaKnit:

Iris Atkinson, Stephanie Cox, Betty Croke, Bonita Dunford, Mrs S J Fisher, Diane Frayling, Claire Gill, Angela Gordon, Katherine Gordon, Joy Hopkins, Pauline Higgins, Joy Johnson, Margaret Kelly, Jean Keys, Kathleen Kinder, Cilla Mann, Margaret Meech, Margaret Mintram, Hilary, Lynda Anne, Norma Steinberg, Lyn Traves